

# Maintenance Guide

## Phantas S1

Technical support & operation center

# Content

01-Clean the Exterior

02-Clean Dust Tank

03-Clean Wastewater

04-Clean/Replace Air Filter

05-Clean/Replace Side Brush

06-Clean/Replace Roller Brush Assembly

07-Clean/Replace Dust Collector

08-Clean Squeegee

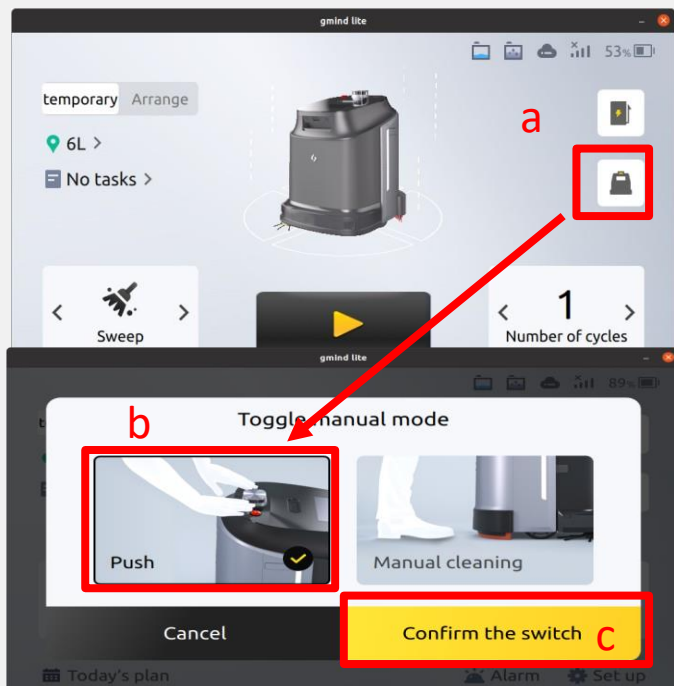
09-Clean/Replace Rubber Strips

# 01-Clean the Exterior

Phantas S1

## 1. Switch to Manual Mode

Click [a]Manual Mode, [b]Push, [c]Confirm the switch



## 2. Push manually

Push it to the place for maintenance.



## 3. Clean

Use wet, lint-free wipe to clean the exterior.

**Notice: Don't wipe the sensors.**



# 01-Clean the Exterior

Phantas S1

4. Use dry and lint-free wipe to smoothly clean lidar, cameras and sensors.



5. Clean the lens of laser on anti-collision shell and PSD-side tracking sensor.



6. Wipe the screen and top lid.



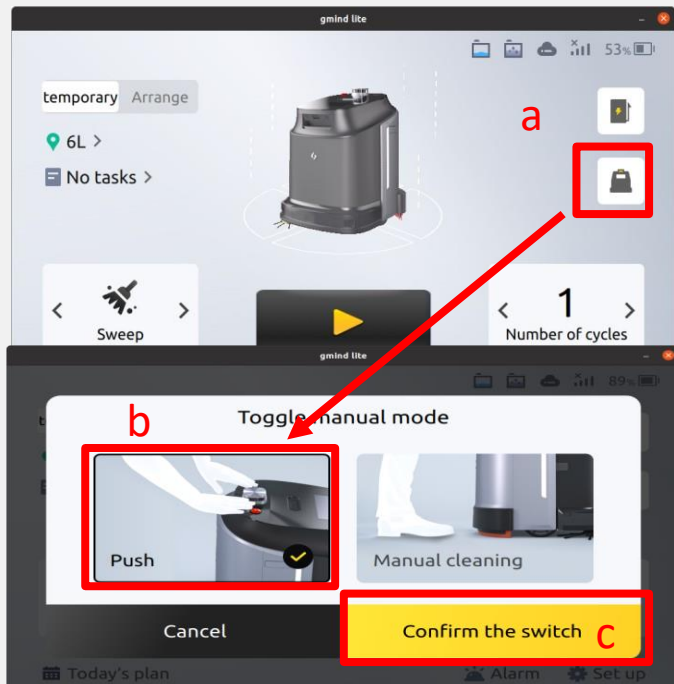
Notice: Use dry and lint-free cloth to smoothly wipe the sensing components

# 02-Clean Dust Tank

Phantas S1

## 1. Switch to Manual Mode

Click [a]Manual Mode, [b]Push, [c]Confirm the switch



## 2. Push manually

Push it to the place for maintenance.



3. Press "OPEN" to open the top lid.





# 02-Clean Dust Tank

Phantas S1

## 4. Take out the dust tank

Remove all assemblies from the dust tank.



5. Remove the top cover of dust tank and take out dust bag .

**Notice: lift the white sheet up to seal the dust bag to prevent dust from spraying out.**

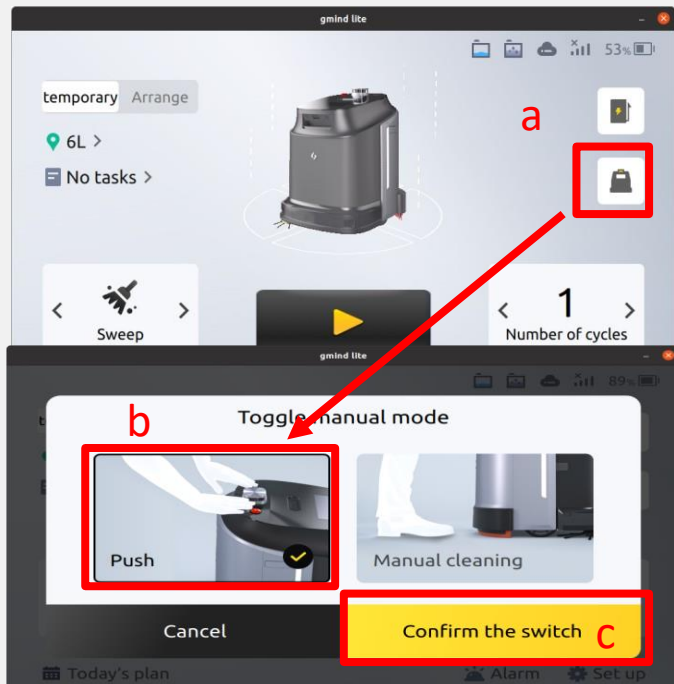


6. Pull the sealing strip out and empty the trash.



## 1. Switch to Manual Mode

Click [a]Manual Mode, [b]Push, [c]Confirm the switch



## 2. Push manually

Push it to the place for maintenance.



3. Press "OPEN" to open the top lid.



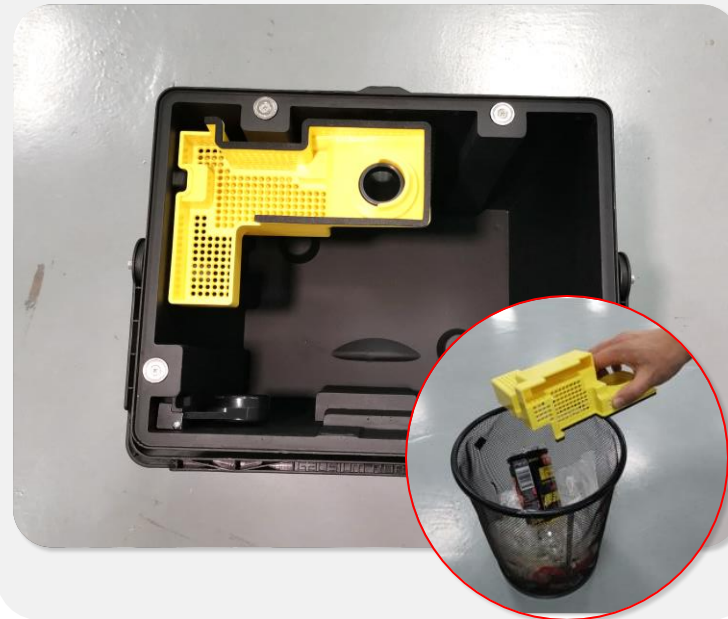
## 4. Remove the wastewater tank

Remove all assemblies from the wastewater tank.



## 5. Clean the filter

Open the cover of the wastewater tank, remove the filter from it, and dump the garbage into the waste basket.



## 6. Pour out wastewater

Dump the wastewater into the sewer or cleaning pool, rinse the wastewater tank with clean water (you can clean the dirt inside the tank via a fur brush), and place the tank into the robot.





# 04-Clean/Replace Air Filter

Phantas S1

1. Open the lid to find the air filter.



2. Press the button from left to right to open the filter shell.



3. Take out the filter, clean it or replace with a new one.



# 05-Clean/Replace Side Brush

Phantas S1

1. Open the side window



2. Grab the rubber boot and pull down to remove the side brush.

**Do not hold the bristles.**



3. Clean side brush with wipes or replace it.

Align the magnetic catch and push the side brush up to install it.



# 06-Clean/Replace Roller Brush Assembly

Phantas S1

1. Open the side window.



2. Press the button and take the roller brush assembly out.



3. Take front and rear brush off the assembly and clean them with steel wire bristle brush or replace them.





# 07-Clean/Replace Dust Collector

Phantas S1

1. Open the side window.



2. Press the button and take the dust collector out.



3. Empty and clean or replace it.





# 08-Clean Squeegee

Phantas S1

1. Use wet wipes to clean the surface of inner and outer strips.



2. Clean the gap between the inner and outer strips.



3. Use wet wipes to clean the exterior.

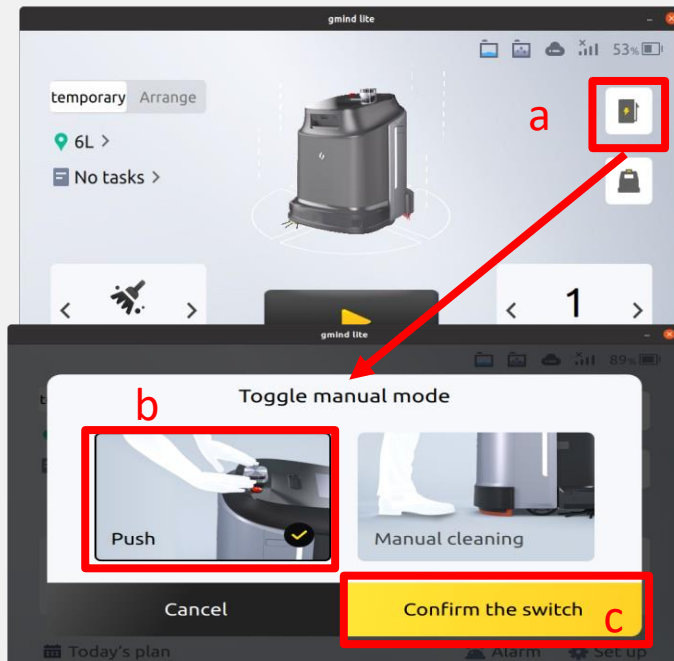


# 09-Clean/Replace Rubber Strips

Phantas S1

## 1. Switch to manual mode

Click [a]Manual Mode, [b]Push, [c]Confirm the switch



2. Push it to the place for maintenance.



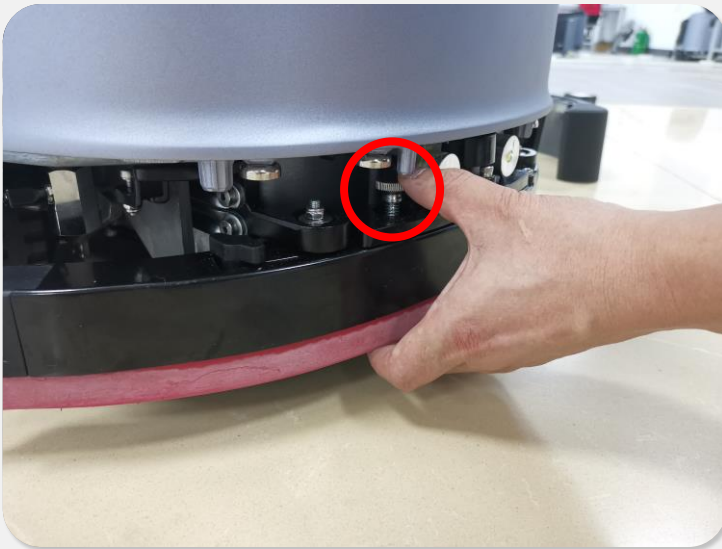
3. Open the side protection skirt first, press down and remove the shell of squeegee then move the lid left side to take it off.



# 09-Clean/Replace Rubber Strips

Phantas S1

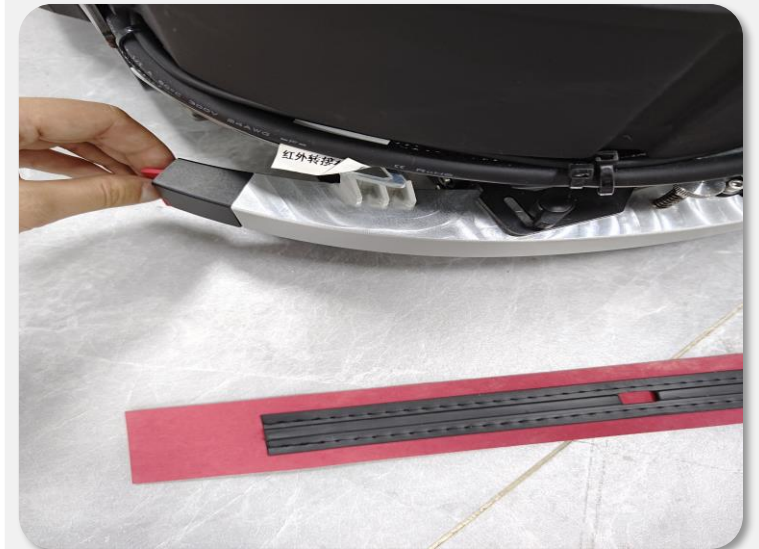
**4.** Press the silver button on squeegee to pull the 2 rubber strips out.  
Clean and wipe them.



**5.** For install, insert the inner strip (the shorter one) first.  
Press and hold the silver button and insert the strip into the slot.  
Confirm it is well-locked.  
(Install the outer strip in the same way)



**6.** Install the shell back.  
Push the shell upward and cover the side strip.



# Questions?

[www.smartservant.nl/helpdesk](http://www.smartservant.nl/helpdesk)